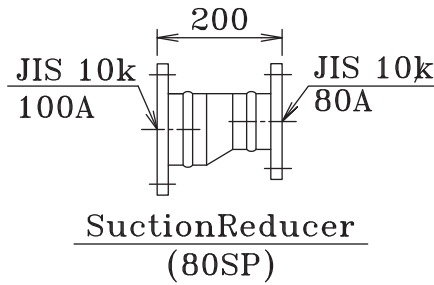
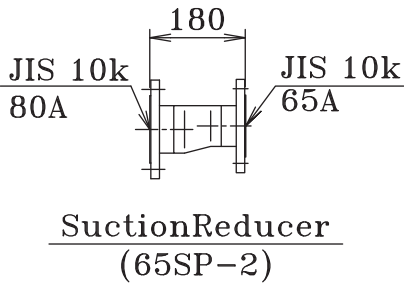
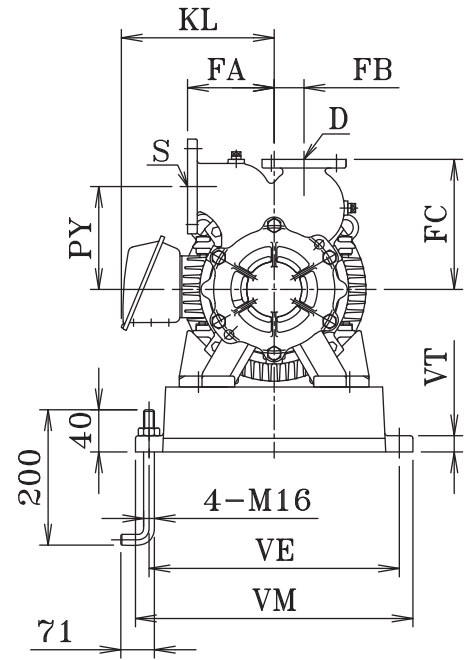
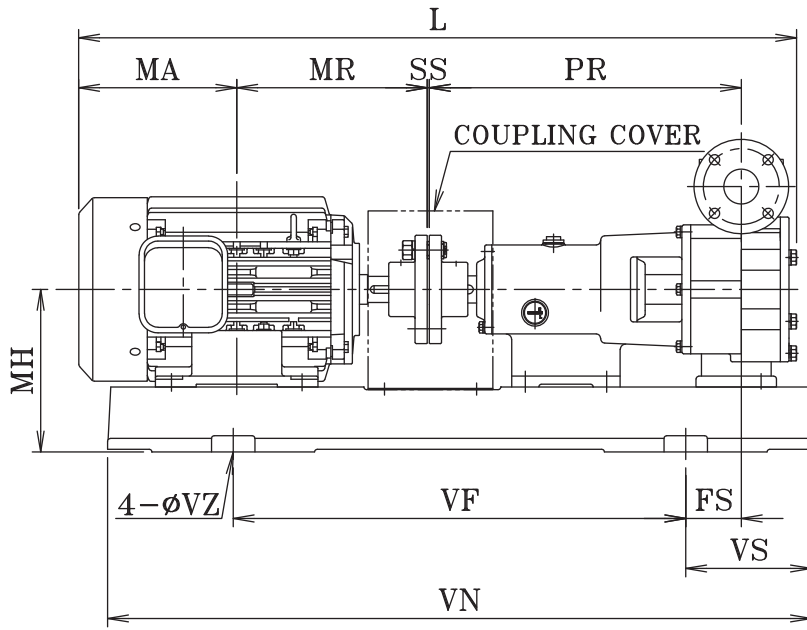


Totally enclosed fan-cooled (IE3)(*1)



Dimension and Weights

(Unit:mm,kg)

Model	kW	S	D	PR	PY	FA	FB	FS	FC	MH	L	MA	MR	SS	VE	VF	VM	VN	VS	VT	VZ	KL	Weight
65SP-2	7.5	65A	50A	575.5	190	160	55	102.5	240	300	1169	229.5	258	4	462	835	512	1285	225	30	19	212	289
	11	65A	50A	575.5	190	160	55	102.5	240	300	1294.5	290	323	4	462	835	512	1285	225	30	19	279.5	320
	15	65A	50A	575.5	190	160	55	102.5	240	300	1294.5	268	345	4	462	835	512	1285	225	30	19	279.5	337
	18.5	65A	50A	575.5	190	160	55	102.5	240	300	1320	287	351.5	4	462	835	512	1285	225	30	19	345	398
	22	65A	50A	575.5	190	160	55	102.5	240	300	1320	287	351.5	4	462	835	512	1285	225	30	19	345	403
80SP	18.5	80A	65A	582	180	170	80	109	280	300	1351.5	287	351.5	4	462	835	512	1285	225	30	19	345	422
	22	80A	65A	582	180	170	80	109	280	300	1351.5	287	351.5	4	462	835	512	1285	225	30	19	345	427
	30	80A	65A	582	180	170	80	39.5	280	360	1429.5	346	370.5	4	356	950	430	1250	150	17.5	19	345	553
	37	80A	65A	582	180	170	80	39.5	280	379	1532.5	394	425.5	4	356	1020	430	1320	150	17.5	19	365	689
	45	80A	65A	582	180	170	80	39.5	280	379	1532.5	394	425.5	4	356	1020	430	1320	150	17.5	19	365	724

-Remarks-

- Dimensions and weights shown in above table reflected to Totally Enclosed Fan Cooled type motor. Values will be slightly different when other type of motor is being used.
- Channel base structure for 80SP mounted with 30 kW motor or greater.
- Suction and discharge flanges are in accordance with JIS 10 K standard.