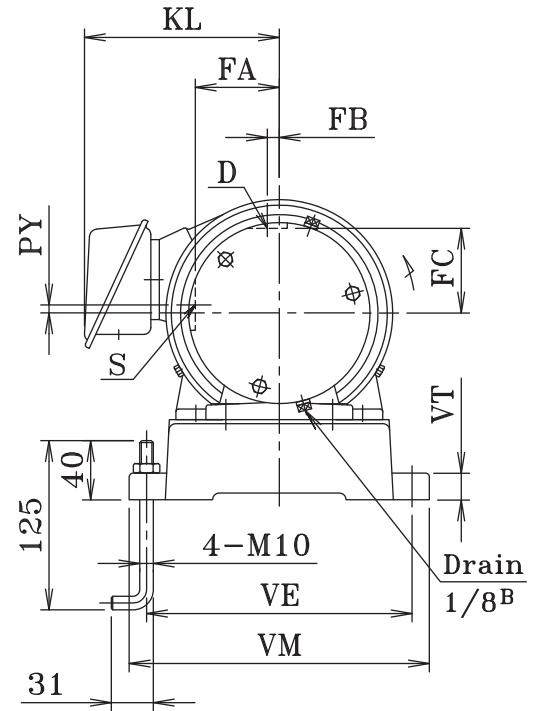
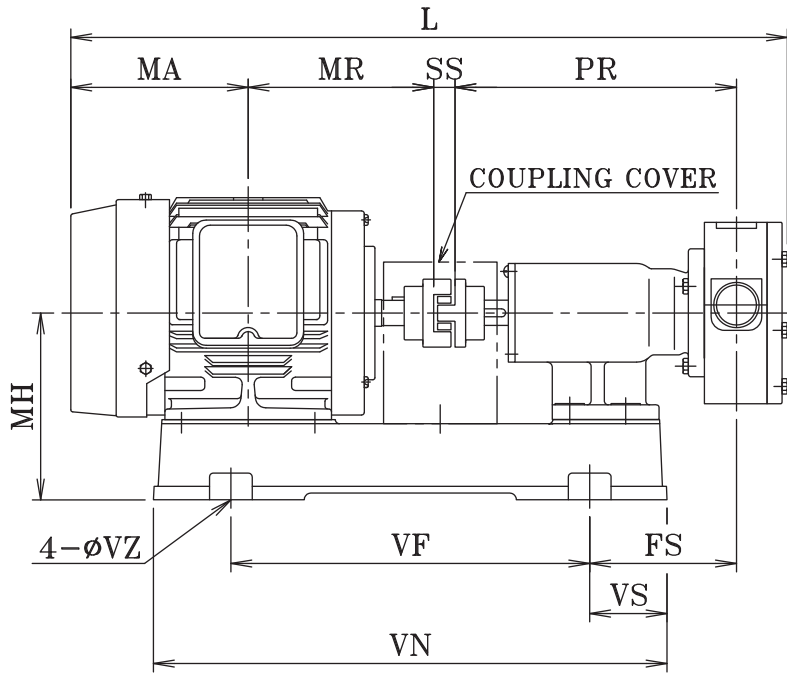


Totally enclosed fan-cooled (IE3)(*1)



Dimension and Weights

(Unit:mm,kg)

Model	kW	S	D	PR	PY	FA	FB	FS	FC	MH	L	MA	MR	SS	VE	VF	VM	VN	VS	VT	VZ	KL	Weight
15JL	0.2	Rc1/2	Rc3/8	212	6	49.5	8	111.5	50	115	469	109	103	14	170	220	196	335	57	12	12	-	18
20JL	0.4	Rc3/4	Rc1/2	209.5	7	53.5	9	105.5	54	130	498.5	121	120	14	184	245	210	357	56	20	12	-	23
25JL	0.75	Rc1	Rc3/4	212	6	63	9	110	63.5	140	527	122	140	14	199	269	225	385	58	20	12	146	31
	1.5	Rc1	Rc3/4	212	6	63	9	117	63.5	150	592	154.5	168.5	18	214	300	240	430	65	20	12	156	40

-Remarks-

Dimensions and weights shown in above table reflected to Totally Enclosed Fan Cooled type motor. Values will be slightly different when other type of motor is being used.

*1 Motor for 0.75kW or greater sizes is complied with IE3 standard.