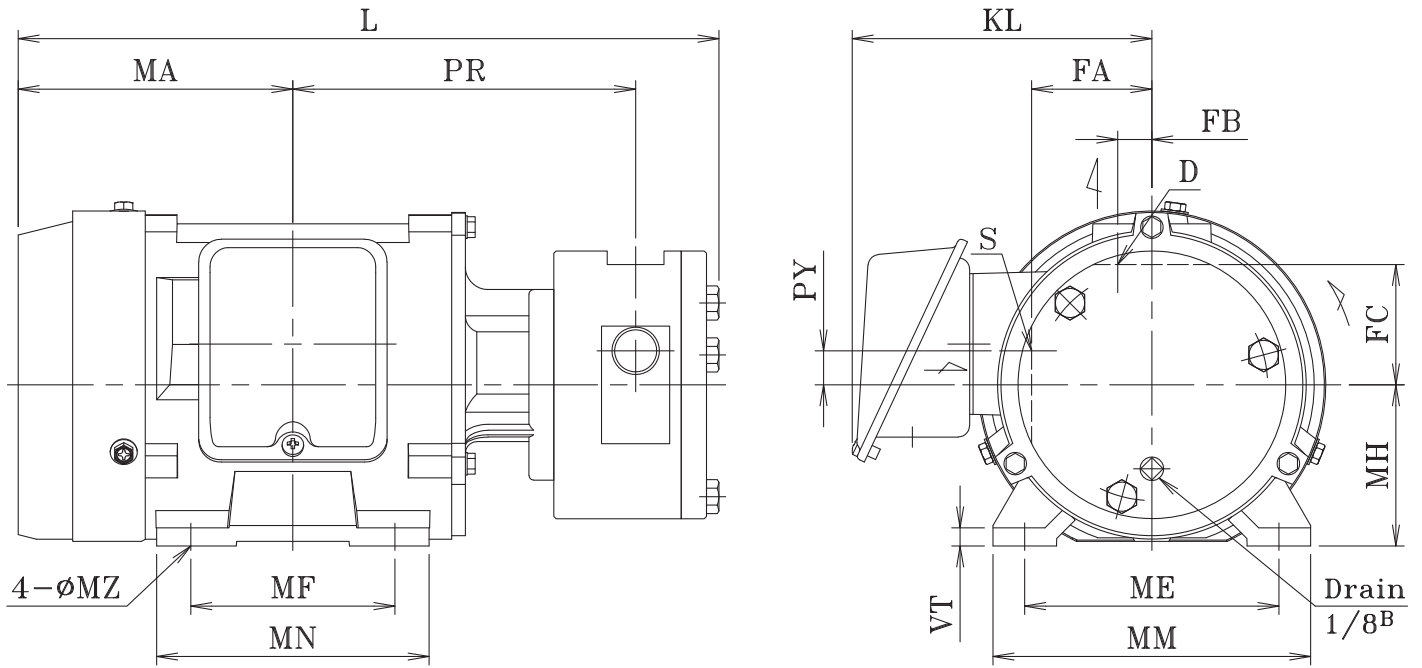
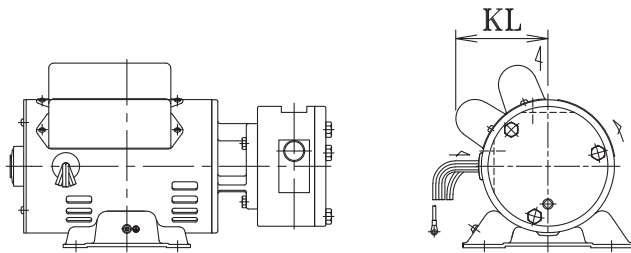


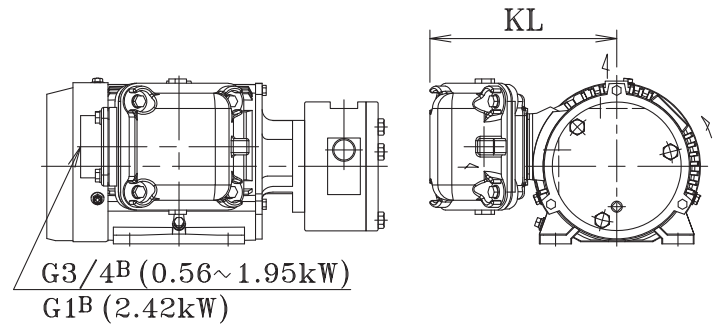
Totally enclosed fan-cooled (IE3)(*1)



Single phase, open drip proof(*2)



Increased safety explosion proof(*3)



Dimension and Weights (*4)

(Unit:mm,kg)

	Model	kW	S	D	PR	PY	FA	FB	FC	MH	L	MA	ME	MF	MM	MN	MZ	VT	KL	Weight
TEFCM(*1)	15JHD04Z	0.56	Rc1/2	Rc3/8	151	15	53	15	53	71	308.5	121	112	90	140	120	8×10	8	132	16
	20JHD07Z	0.975	Rc3/4	Rc1/2	140.5	19	66	19	66	80	319.5	140	125	100	155	125	10×12	8	147	26
	20JHD15Z	1.95	Rc3/4	Rc1/2	163.5	19	66	19	66	90	357	154.5	140	125	176	149	10×12	10	156	30
	25JHD22Z	2.42	Rc1	Rc3/4	157.5	13	77	16	78	90	393	183.5	140	125	176	149	10×12	10	156	36
SPIM(*2)	15JHD04S	0.56	Rc1/2	Rc3/8	164.5	15	53	15	53	80	316	115	125	100	167	125	10×17	3.2	91	20
ISM(*3)	15JHD04A	0.56	Rc1/2	Rc3/8	151	15	53	15	53	71	308.5	121	112	90	140	120	7	8	171	25
	20JHD07A	0.975	Rc3/4	Rc1/2	140.5	19	66	19	66	80	319.5	140	125	100	155	125	10	8	181	28
	20JHD15A	1.95	Rc3/4	Rc1/2	163.5	19	66	19	66	90	386	183.5	140	125	172	149	10	10	195	41.5
	25JHD22A	2.42	Rc1	Rc3/4	172	13	77	16	78	100	402	178	160	140	196	168	12	12	195	49

—Remarks—

The terminal box of the totally enclosed fan cooling motor 0.56kW is made of the plastics.

*1: Motors for 0.75kW and above are complied to IE3 standard.

*2: There will be 2 capacitors, one for starting purpose and one for running purpose.

*4: Values stated in *4 are actual motor output of "Extra-load capacity motors".